

SOS-UK STUDENTS' UNION SUPPORT 2024/25



STUDENTS
ORGANISING FOR
SUSTAINABILITY
UNITED KINGDOM

PARTNER WITH SOS-UK IN FOR 2024/25!

Welcome, we are excited to launch our activities and campaigns for 2024-25 designed to support and drive your students' union towards its sustainability objectives. We've listened to your valuable feedback and worked hard to implement it. Find out how our work can enhance positive sustainability behaviors, drive curriculum change towards sustainability and climate justice, bring nature back to your campuses, and improve overall wellbeing.

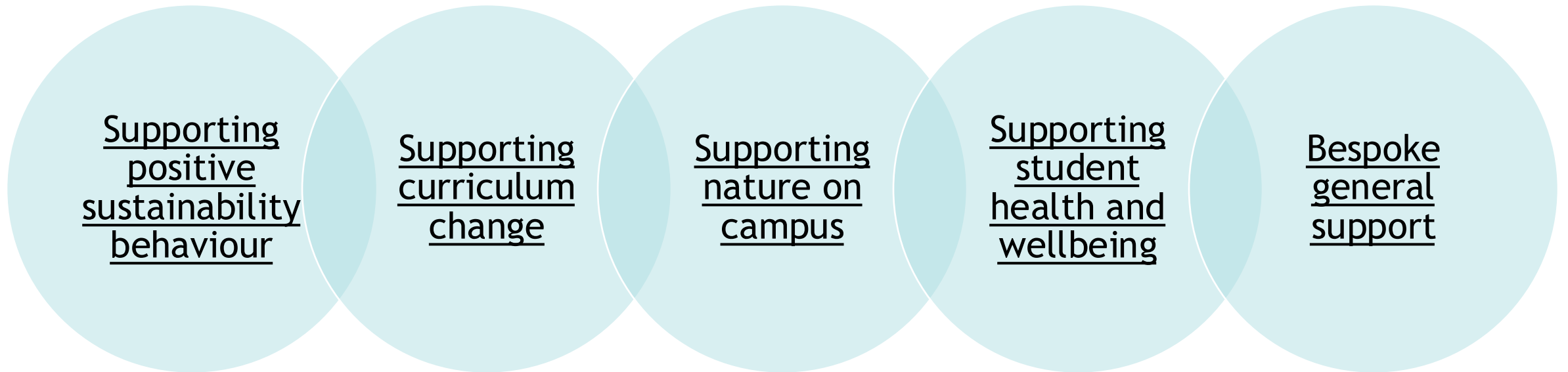
We are excited to launch two new pilot initiatives for this year, 'Edible Campuses' and 'Wilding Campuses Advisory Programme', which are designed to tackle the ecological and biodiversity crises that we are in.

By working with SOS-UK, you're not just enhancing your students' union's sustainability efforts—you're also contributing to our broader charitable objectives. We collaborate with and empower students and young people on impactful campaigns and initiatives to transform the sector into a force for good. Join us on this journey and explore our offer to take steps towards a more sustainable and equitable future.

Larissa Kennedy SOS-UK President

THIS DOCUMENT IS ARRANGED BY FIVE SUPPORT AREAS

Want to focus on something specific? Click the links below. If you prefer to see it all, just keep reading!



BEST FOR

PROGRAMME	Page(s)	Student engagement	Staff engagement	Behaviour change	Carbon reduction	Wellbeing	Sustainable food	Education	Biodiversity
<u>Green Impact Students' Unions</u>	9-10	✓	✓	✓	✓	✓			
<u>Homes Fit For Study</u>	11	✓				✓			
<u>Invest for Change</u>	12	✓	✓	✓					
<u>Responsible Futures</u>	14	✓	✓					✓	
<u>Hedgehog Friendly Campus</u>	16	✓	✓						✓
<u>Edible Campus *NEW*</u>	17	✓	✓			✓	✓		
<u>Wilder Campuses Advisory Programme *NEW*</u>	18								
<u>Wellbeing Sprints</u>	20					✓			
<u>Alcohol Impact</u>	21	✓	✓	✓		✓			
<u>Drug & Alcohol Impact</u>	22	✓	✓	✓		✓			
<u>Drink Rethink</u>	23	✓		✓		✓			
<u>Sustainability Summit</u>	25								
<u>Learning academy</u>	26-28								
<u>Inclusion for climate justice</u>	29	✓	✓	✓	✓				
<u>Additional partnership programmes</u>	30								

SOS-UK IS AN EDUCATIONAL CHARITY FOCUSING ON SUSTAINABILITY

SOS-UK **engages**, **supports** and **empowers** students and wider society to learn, act and lead for sustainability. Ours is a **long-term investment in education** for a better future.

Our mission is getting more students **learning, acting and leading for sustainability**; embedding sustainability in education, **from early years to adult learning**; and making sustainability **more inclusive**, so it's for everyone.

We are proud that UNESCO recognise SOS-UK as one of the global leaders of education for sustainable development.

SOS-UK staff represent a range of academic and professional backgrounds from anthropology to biology and with specialisms in communications and research.

This document outlines SOS-UK's 2024-25 support for students' unions. Continue reading to see how we can support you.

Get in touch with us at hello@sos-uk.org if you have any questions.



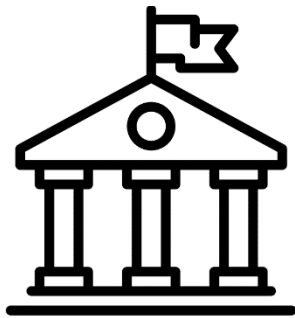
Stay up to date by following us or signing up to our newsletter:

[Sign up to news](#)



OUR WORK IS DRIVEN BY STUDENT DEMAND

Embedding sustainability across campuses, curriculums and communities is fundamental to representing our students, and strengthening our students' unions. Our work is underpinned by findings from a national online survey which has been running since 2010.



88% say they agree their place of study should actively incorporate and promote sustainable development



79% would like to see sustainable development actively incorporated and promoted through *all* courses



66% say sustainable development is something they would like to learn more about

Source: [Sustainability Skills Survey 2021-22](#) | Base: c.8,500 respondents in higher education across the UK

SUPPORTING POSITIVE SUSTAINABILITY BEHAVIOUR

We all drive and influence norms that make up our collective culture on campuses and beyond. By developing shared understandings of sustainability and identifying what needs to change, we can empower students and staff to take positive sustainability action. Check out our support for 2024-25 over the next few pages.

GREEN IMPACT STUDENTS' UNIONS

Green Impact Students' Unions (GISU) is our flagship sustainability support package and awards programme for SUs.

It's designed to help your SU run impactful projects and campaigns, using our power as the student movement to create lasting change.

- A **framework** for your SU staff, officers and students to collaboratively address key issues to lead on embedding sustainability and social justice across campus, the curriculum, and wider society. Ability to receive accreditation for your progress.
- **Support** for your SU to build impactful projects and campaigns around climate justice and equality, curriculum reform, health and wellbeing and much more.
- Being part our **network**. We provide opportunities to partner with other SUs, hold networking events, specialised webinars and share good practice through resources and case studies.

For further information, visit our [Green Impact Microsite](#). Programme fees and included content for 2024/25 are:

Access to the toolkit only (no audit or accreditation)	£35 +VAT
Full programme participation and support with online audit	£495 +VAT for 1 year or £890 +VAT for 2 years
Full programme participation and support with in-person audit	£750 +VAT for 1 year or £1,350 +VAT for 2 years
1 x sustainable wooden award trophy	£30 +VAT
GISU lead staff & officer training and networking day, 5 th Dec 2024	£100 +VAT
Additional award support (online planning session, additional check-in call, and pre-audit check-in)	£290 +VAT

Best for

Behaviour
change

Carbon
reduction

Staff
engagement

Student
engagement

Wellbeing



STUDENTS' UNIONS TELL US THAT GREEN IMPACT PROVIDES STRUCTURE FOR THEIR SUSTAINABILITY WORK

- The framework helps to **embed sustainability** into your strategic plans and other annual plans.
- Helps to **demonstrate, monitor and evaluate** your success and sustainability progress.
- Showcases what your SU is doing and gain **accreditation & recognition**.
- To hold your SU **accountable** for actions of day-to-day activities.
- Provides an opportunity to **self-reflect and review**.
- Encourages **collaboration** with other SUs.
- Useful way to **communicate to students** what your SU is doing.
- **National benchmark** - other SUs are taking part.
- Helps those involved **realise what they can do** to improve sustainability in your SU.

HOMES FIT FOR STUDY

Background

Our 2023 research shows that 59% of students feel uncomfortably cold in their privately properties, for 48% this leaves them feeling anxious or depressed, and for 38% it had had a negative effect on their academic work. Yet whilst the combination of low incomes and poor-quality housing put students at high risk of falling into fuel poverty they are rarely considered or eligible for support schemes.

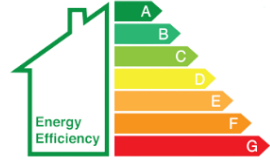
How it works...

We have supported students in the private rented sector for the past two years through our Homes Fit For Study project. Depending on funding, we are looking to continue this work in 2024/25, including student focused advice and engagement about home energy.

Register your interest

Energy performance certificate

- Every property should have an energy performance certificate (EPC)
- A is the most efficient, G is the least efficient
- All rental houses should legally be E or above
- You can view the EPC of any rental property online



The diagram shows a house icon with a vertical bar next to it representing the Energy Efficiency scale. The scale is a vertical bar with seven segments, each labeled with a letter from A at the top to G at the bottom. The segments are colored: A (green), B (light green), C (yellow-green), D (yellow), E (orange), F (red-orange), and G (red). The text 'Energy Efficiency' is written vertically next to the bar.

nus student switch off

SOS STUDENTS ORGANISING FOR SUSTAINABILITY UNITED KINGDOM



Best for

Student engagement

Behaviour change

Carbon reduction

Wellbeing

INVEST FOR CHANGE



Invest for Change is a campaign to **radically reform how universities invest their endowments**, unleashing their positive potential to create a more just and sustainable economy.

UK universities have over **£15 billion** of endowments invested in companies that frequently act against the interests of students and the world they will graduate into, including arms manufacturers, fossil fuel giants and other socially and environmentally harmful corporations.

We call on universities to:



Invest in environmental and social justice solutions that have measurable, real-world impact.



Engage with investments to spur bold wider corporate behaviour change.



Transform governance to adopt responsible investment policies that support a just and sustainable future.

Join our national campaign to transform university finances to work in the interest of students, not against them! If you're an officer or student campaigner, sign up to one of our free ethical finance trainings this August [here](#). **Book a free workshop** with us to find out more or check out our [website](#) and [resources](#)!

Contact hello@sos-uk.org for more information!

Best for

Student
engagement

Behaviour
change

SUPPORTING CURRICULUM CHANGE

Changing formal education is fundamental to transforming society, which is why SOS-UK offers programmes that support students' unions to work with their institution to embed sustainability and climate justice into their teaching and learning. Check out our support for 2024-25 over the next few pages.

RESPONSIBLE FUTURES

[Responsible Futures](#) is our accreditation programme and supported change framework for embedding sustainability and climate justice through all aspects of student learning. It promotes a **whole-institution approach** to embed sustainability learning through **formal, informal, and subliminal curricula**. To date, **48** universities and colleges have participated in partnership with their students' union, representing over **one million students** in the UK and globally.

Our support includes access to the online toolkit and framework, annual bespoke support (which could include training, audit preparation, speaking at events, research), membership to the national and global cohort network, national support afternoons (2-3 per year), informal online cohort catch ups and webinars (2-3 per year) led by SOS-UK and nominated host partnerships, access to the online resource bank, two-day student-led audit, feedback report and ad hoc remote support as required. [Full programme information](#).



Annual membership fee	First year	Subsequent year	ESD changemakers bolt-on*
			£5,110 + VAT
Higher Education Institutions	£5,100 + VAT	£4,410 + VAT	£5,110 + VAT
Further Education Institutions	£4,450 + VAT	£3,990 + VAT	

Responsible Futures

Best for

Student engagement

Curriculum

Staff engagement

SUPPORTING NATURE ON CAMPUS

We support students' unions to address the ecological crisis through running practical, solutions-focused biodiversity and nature programmes. The UK is one of the most nature depleted countries in the world, and we need to act. Check out our support for 2024-25 over the next few pages.

HEDGEHOG FRIENDLY CAMPUS AWARD

Hedgehogs are a beloved species now vulnerable to extinction in the UK. Hedgehog Friendly Campus is an awards programme with a custom toolkit and associated activities that offer your staff and students the opportunity to:

- Protect hedgehogs and other wildlife from hazards
- Create and enhance habitats
- Raise awareness and engage staff and students

How it works...

This popular programme is open to universities and colleges who work through Bronze, Silver, Gold and Platinum awards. We provide opportunities to track wildlife, create engaging awareness campaigns and support you to restore habitats. Awards are accredited by the [British Hedgehog Preservation Society](#).

[Full programme information](#).

Full University & College Support Package: £3,823 +VAT (£2868 +VAT for subsidised places from [British Hedgehog Preservation Society](#), available on a first-come, first-served basis). Includes toolkit access, planning and support calls with lead contact, student-led audit training, three additional supporting activities (one in person), audit and accreditation certificate, [student ambassador](#) and [auditor](#) digital skills badges, ad hoc support and access to The Hedge peer networking sessions.

Basic University and College Support Package: £800 +VAT. Includes access to the toolkit, The Hedge peer networking sessions and allows you to maintain accreditation with an end of year audit (no supporting activities, planning or support calls are included).

Minimum Access Package: £50 +VAT. Includes access to the toolkit, The Hedge peer networking sessions and you will be listed as a participating member on our [website](#) (no accreditation, supporting activities or planning or support calls).

Free package: Includes toolkit access only (no accreditation, supporting activities, planning or support calls or access to The Hedge networking sessions).



Best for

Staff
engagement

Wellbeing

Student
engagement

Biodiversity

EDIBLE CAMPUS *NEW*

Edible Campus can help transform your campus into a connected landscape of food for people and wildlife. Our focus is on climate resilient growing, increasing biodiversity, and supporting student and staff wellbeing.

How it works...

- We will visit you on your campus to explore opportunities, undertake a practical task and discuss your goals for the year
- Support will continue through 121 calls, helping to keep on track with your yearly goals and overcome challenges as they arise.
- Online skills-based training sessions will be delivered to your students and staff, topics depending on demands of cohort

For full programme information [visit our website](#).

Annual membership fee: £2950 + VAT. We also offer additional in person site visits and bespoke consultancy (for example creation of a sustainable food policy), please [email](#) us to discuss these options.

Price includes: 1 in person visit, 121 support calls, group skills sessions (topics based on demands of the cohort), generation of resources and ad hoc support.

Benefits include: Demonstrable action on UN Sustainable Development Goals 2, 3 & 15 and the climate and nature emergencies; goal setting that feeds into wider sustainability strategies and strategic frameworks; engagement activities focused on student wellbeing and the cost-of-living crisis; skill development on low carbon growing; priority small pot funding opportunity; opportunities for collaboration, comms around achievements and feeding into existing research, teaching and living labs.



Credit: Leeds Green Action Society



Best for

Sustainable
food

Student
engagement

Staff
engagement

Wellbeing

Biodiversity

WILDER CAMPUSES ADVISORY PROGRAMME *NEW*

Background

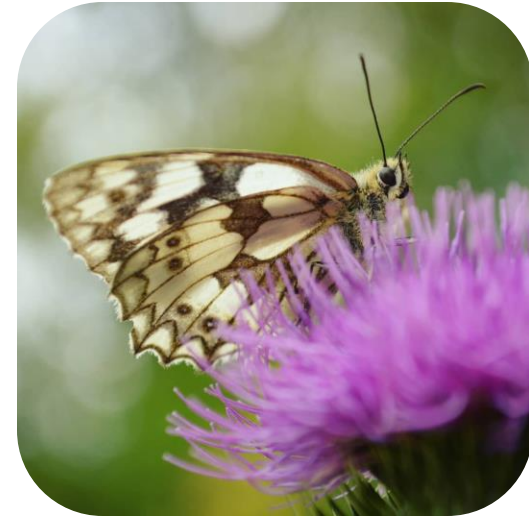
SOS-UK's brand-new Wilder Campuses Advisory Programme supports your campus to tackle the nature emergency with students at the forefront.

How it works

You'll receive an initial support call, a student nature consultation, a student habitat survey training course and a final report, allowing you to make informed, student-led decisions on what you can do for nature.

Wilder Campuses will be particularly useful if your university or college is yet to write a Biodiversity Action Plan, or your current plan is due to be reviewed.

[Full Programme Information on our website.](#)



Best for

Wellbeing

Student
engagement

Biodiversity

Annual cost: £3,100 +VAT. This is a pilot programme, so we can be flexible on the elements of the programme and cost.

Price includes: An initial support call with SOS-UK's Biodiversity team, an in-person student consultation capturing student opinions on your current or proposed Biodiversity Action Plan, an in-person student habitat training course and a final Wilder Campuses report. The report will include the results from the student consultation, helping you to plan your next steps for nature. It will also include results from the student habitat survey as well as a recommended supplier list from our network of partners.

Other benefits: There is a bolt-on option to access our national student nature opinion survey which you can share with your students.

SUPPORTING STUDENT HEALTH AND WELLBEING

We supports students' unions to take a holistic approach in creating healthy and inclusive cultures on campuses around drugs and alcohol. Check out our support for 2024-25 over the next few pages.

WELLBEING AND BIODIVERSITY ACTION WEEKS



Students' unions can sign up to take part in our week long wellbeing and biodiversity action weeks, which **focus on specific wellbeing and biodiversity themes** to help to support students throughout the academic year.

The action weeks have a scheduled **daily online activity** including competitions, activity challenges and quizzes. There will be 3 wellbeing weeks at set points in the year, and 2 biodiversity weeks running on dates that suit your campus. You can choose to run one, a few, or all of the action weeks:



Students' Union Wellbeing Action Week 2024/25 fees

£575 (+VAT) per action week

Note: standard price for universities and organisations is £800 per action week, a £225 discounted price is offered to SUs.

Best for

Student
engagement

Behaviour
change

Carbon
reduction

Wellbeing

ALCOHOL IMPACT

Alcohol Impact is our whole-university programme and accreditation mark designed to foster responsible drinking cultures for students. The programme adopts social change theory; aiming to reduce harm and improve welfare, well-being and academic achievement - whilst creating more inclusive spaces and enhancing the student experience.

How it Works

- Our online toolkit provides resources and highlights areas of good practice.
- The students' union and university work together to improve their working practices and undertake a number of ambitious behaviour change interventions.
- After 2 years, SOS-UK trains and supports local students to conduct an audit.
- If criteria have been completed to a satisfactory level, the institution is awarded with our accreditation mark.



Alcohol
Impact

Best for

Behaviour
change

Wellbeing

Participating institutions receive a support package including regular 1-2-1s, local and national workshops and training events and numerous resources and project materials. [Full programme information.](#)

Working towards accreditation fee, supported for one year	Post accreditation membership for one year	Working towards accreditation fee, supported for two years (10% discount)	Post accreditation membership for two year (10% discount)
£6,000 +VAT	£4,900 +VAT	£10,800 +VAT	£8,820 +VAT

Please note - the invoice, may be paid by the university, students' union, or external funding. If signing up to a multi-year programme, you can either pay via one invoice or be invoiced in annual installments.

DRUG AND ALCOHOL IMPACT

Building upon the success of Alcohol Impact, Drug and Alcohol Impact supports institutions to embed social norms of responsible drinking on our campuses, alongside taking action to move away from a zero-tolerance approach to student drug use. Partnerships are supported to develop an effective, evidence-based approach to reducing the harm students face from drugs, which prioritises their health and wellbeing.

How it Works

- Our online toolkit provides resources and highlights areas of good practice.
- The students' union and university work together to improve their working practices and undertake a number of ambitious behaviour change interventions.
- After 2 years, SOS-UK trains and supports local students to conduct an audit.
- If criteria have been completed to a satisfactory level, the institution is awarded with our accreditation mark.

Participating institutions receive a support package including regular 1-2-1s, local and national workshops and training events and numerous resources and project materials. [Full programme information.](#)

Working towards accreditation fee, supported for one year	Post accreditation membership for one year	Working towards accreditation fee, supported for two years (10% discount)	Post accreditation membership for two years (10% discount)
£7,190 +VAT	£5,950 +VAT	£12,890 +VAT	£10,710 +VAT

Please note - the invoice, may be paid by the university, students' union, or external funding. If signing up to a multi-year programme, you can either pay via one invoice or be invoiced in annual installments.

Drug & Alcohol

Impact

Best for

Behaviour change

Wellbeing



DRINK RETHINK

Drink Rethink is a preventative approach helping students to reflect on their drinking, considering the risks associated and the benefits of cutting down. The intervention is delivered by trained students ambassadors who use a nationally recognised evidence-based behaviour change tool.

[Full programme information.](#)

Programme fees and included content for 2024-25 are:

Tier 1 Support Student ambassador recruitment material, 1 day ambassador training (or train the trainer), digital copies of leaflets and branding, access to raw data and telephone/email support.	Tier 2 support Same as Tier 1 plus pre and post-surveying of student ambassadors, access to raw data, production of simple graphs for use in reports and telephone/email support	Tier 3 support Same as Tier 2, plus one day on-site support of Drink Rethink Ambassadors and production of a full final report
£1,780 +VAT	£2,040 +VAT	£2,615 +VAT



Best for

Behaviour
change

Wellbeing

General Support

We offer a range of fully bespoke activities, training and support to help drive sustainability in a range of areas, delivered by our friendly expert team.

THE STUDENT SUSTAINABILITY SUMMIT

The Sustainability Summit is our flagship sustainability event for students, officers and staff from across the movement.

Date TBC

The Sustainability Summit offers workshops, talks and panel discussions with some of the UK's top environmental and social justice activists and campaigners, from organisations such as Friends of the Earth and People and Planet, as well as the students and students' unions leading the youth climate movement.

The Summit provides you with the opportunity to **connect with others** involved with environmental and climate justice campaigning, and to **gain practical skills** in community organising, campaign planning, liberation and sustainability, and so much more.

The Summit is open to all students over the age of 16, as well as officers and staff from both the SU and institution.

View the Sustainability Summit 2023 [agenda](#) for an idea of what is covered.

If you have any queries please contact hello@sos-uk.org



Best for

Student
engagement

Behaviour
change

Education

LEARNING ACADEMY: TRAINING, WORKSHOPS AND EVENTS

LEARNING
academy

We provide learning opportunities delivered in a variety of methods including face-to-face and online, and to a range of audiences such as students, student representatives, officers and SU staff.

Some training sessions are delivered centrally across the SU network, whereas others are available for individual SUs to book on demand.

You can also book training for your SU on many topics including:

- [Course reps & sustainability: an introduction to ESD](#)
- [Sustainable students](#)
- [Decolonising and decarbonising education](#)



Best for

Student
engagement

Behaviour
change

Staff
engagement

Education

Price: Centralised training starts at £110 per person + VAT, bespoke SU training starts from £395 + VAT. [Find out more on our Learning Academy pages here](#) or get in touch on hello@sos-uk.org

LEARNING ACADEMY: CARBON LITERACY

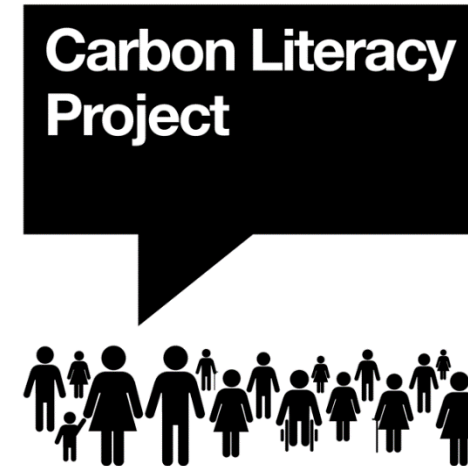
Carbon Literacy is defined as: “An awareness of the carbon dioxide costs and impacts of everyday activities, and the ability and motivation to reduce emissions, on an individual, community and organisational basis.”

The training will provide attendees with introductory science on the climate crisis to understand the social and environmental impacts of carbon dioxide emissions. Additionally, our SOS-UK course has an increased focus on climate justice, and the inter-related nature of carbon emissions and wider environmental concerns such as biodiversity loss. The course lasts around 12 hours (7 of these are live workshops) and includes online training elements and self study.

This training is certified by [The Carbon Literacy Project](#). Upon successful completion of the training, learners will be awarded a Carbon Literacy certificate and a digital badge.

Benefits for the organisation include:

- Our Carbon Literacy course gives individuals the direction and motivation to make realistic, manageable changes to reduce their carbon footprint in the context of their workplace or place of study
- Ability to engage with a committed group of individuals (course participants) who understand the importance of climate action.
- Supporting the aims of other sustainability projects



Best for

Student
engagement

Behaviour
change

Carbon
reduction

Staff
engagement

Education

Bespoke training per SU starts from £2,200+VAT for 20 spaces and includes certification for attendees. [Find out more on our Learning Academy page](#) or get in touch on hello@sos-uk.org

COURSE REPS & SUSTAINABILITY: AN INTRODUCTION TO EDUCATION FOR SUSTAINABLE DEVELOPMENT (ESD)

Introduce course reps to sustainability and how it links to the curriculum.

This training is an introduction to sustainability and education for sustainable development for course representatives. The training explores how course reps can use their roles to contribute towards progressing sustainability and Education for Sustainable Development (ESD) in the curriculum.

Course reps completing this training will be able to:

- Gain an understanding of how they can champion **environmental, social, and economic sustainability** through their role.
- Demonstrate knowledge and understanding of **sustainability in the context of their course**.
- Have **confidence in communicating** about and for sustainability to other staff and students

This training is designed for course/programme/faculty reps, but is also relevant for officers and SU staff.



Best for

Student
engagement

Behaviour
change

Education

Staff
engagement

Price: Bespoke training per SU starts from £420+VAT. [Find out more on our Learning Academy page](#) or get in touch on hello@sos-uk.org

INCLUSION FOR CLIMATE JUSTICE

Data from [2022 research by SOS-UK, UKRI and IEMA](#), and the latest findings from SOS-UK led [The RACE Report](#) highlights the lack of ethnically and racially minoritised staff in environment professions and the sector's career pipelines. The RACE Report found that only 7% of professionals in the sector are People of Colour. The average for the entire work population is double that (14%).

Lack of inclusion and diversity in the sector is preventing truly delivering on climate and environmental justice. The tertiary education sector has a critical role in addressing this. SOS-UK's Inclusion and climate justice team was set up to tackle this issue, working directly with students, employers, and colleges and universities.

6% to 14% of students taking higher education courses closely related to environment careers identify as Black, Asian, Mixed or other ethnicities in comparison with 26% across all higher education subjects.

[SOS-UK, UKRI, IEMA, 2022](#)

LEARNING
academy

Best for

Student
engagement

Behaviour
change

Carbon
reduction

Staff
engagement

Curriculum

We offer tailored support for staff and students

- **Workshops, training and consultancy for academic staff (and students)** leading on and working on environment, climate, sustainability and conservation related modules and courses. This could include those working on (or studying) courses from geospatial mapping to sustainability in the built environment; to environmental science or political ecology. Workshops will focus on better inclusion onto courses, help with how the courses are structured, as well helping students have better access to academic and career development in the sector.
- **Training and consultancy for professional services staff** focused on careers, recruitment and HR teams with the aim of improving access for underrepresented students to the green and associated sector.
- We can provide **bespoke support and mentoring** for individual students or staff, teams and groups within your institution.

Price: Bespoke training starts from £420 + VAT. [Find out more on our Learning Academy pages](#) or get in touch at hello@sos-uk.org

SUs PARTNER WITH THEIR INSTITUTIONS TO RUN SUSTAINABILITY PROGRAMMES

- [Fairtrade University and College Award](#): From procuring more Fairtrade products to embedding trade justice principles in policies and campaigns, the Award seeks to impact students, staff and producers.
- [Student sustainability engagement](#): builds students' sustainability knowledge and carbon literacy, focusing on enhancing student experience and empowerment
- [Education for sustainable development changemakers](#): supports partnership working between students and staff to establish a cocreation approach for embedding ESD in teaching and learning to address climate justice across all disciplines.
- [Student-Led Sustainability Curriculum Mapping](#): A support package for mapping the SDGs across the curriculum through a student-led audit.

FREE RESOURCES AND SUPPORT

- [Look up your institution's carbon target](#)
- [Read about links between sustainability & intersectionality](#), or [start an intersectionality learning group](#)
- [Check out our sustainable food guide](#)
- [Share energy saving advice with your students](#)
- [Write to your MP/MSP to demand action on climate education](#)

Keep up to date with our latest opportunities

- [Sign up to our main newsletter](#)
- [Sign up to our sustainable accommodation newsletter](#)
- [Sign up to our food and farming newsletter](#)
- [Join our Alcohol, drugs and student wellbeing network](#)
- [Follow us on X](#), [Instagram](#), or [LinkedIn](#) or [check out our website](#)

[Access our 2024-25 sign up form](#)

We look forward to supporting you on your sustainability journey.

Connect with us:



[sos-uk.org](https://www.sos-uk.org)

hello@sos-uk.org

Registered charity: 1184011



STUDENTS
ORGANISING FOR
SUSTAINABILITY
UNITED KINGDOM