

SOS-UK UNIVERSITY AND COLLEGE SUPPORT 2024-25



STUDENTS
ORGANISING FOR
SUSTAINABILITY
UNITED KINGDOM

PARTNER WITH SOS-UK IN 2024-25!

Welcome, we are excited to present our popular suite of programmes and activities for 2024-25 designed to support and drive your institution towards its sustainability objectives! We've listened to your valuable feedback and worked hard to make our programmes work for you. Find out how our work can enhance positive sustainability behaviors, drive curriculum change towards sustainability and climate justice, bring nature back to your campuses, and improve overall well-being within your institution. We are excited to launch two new pilot initiatives for this year, 'Edible Campuses' and 'Wilding Campuses Advisory Programme', which are designed to tackle the ecological and biodiversity crises that we are in.

By working with SOS-UK, you're not just enhancing your institution's sustainability efforts—you're also contributing to our broader charitable objectives. We collaborate with and empower students and young people on impactful campaigns and initiatives to transform the sector into a force for good. Join us on this journey and explore our offer to take steps towards a more sustainable and equitable future.

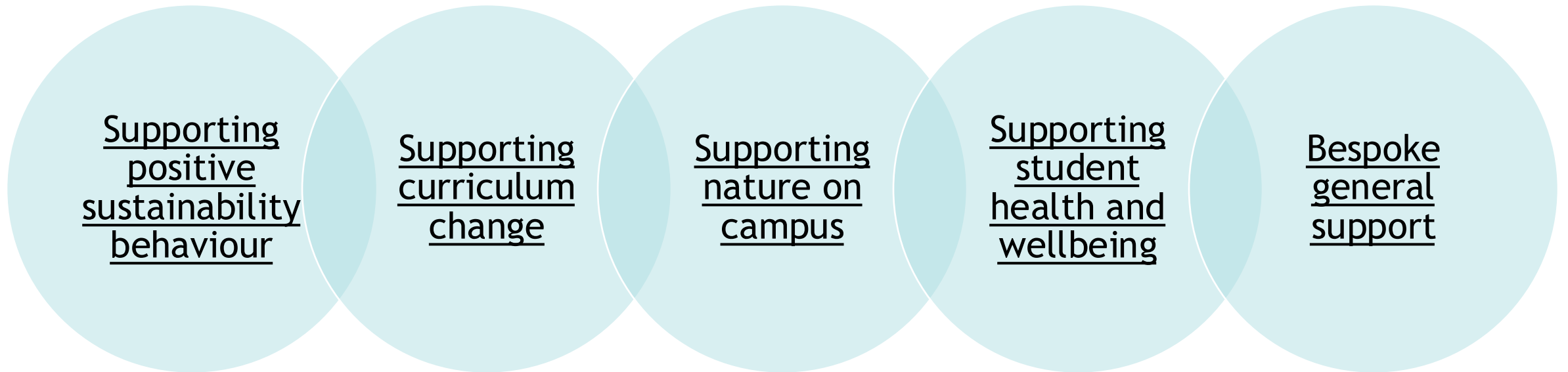


Joanna Romanowicz, Director of Engagement
Quinn Runkle, Director of Education

Meg Baker and Manu Maunganidze, Co-Directors of Inclusion & Climate Justice

THIS DOCUMENT IS ARRANGED BY FIVE SUPPORT AREAS

Want to focus on something specific? Click the links below. If you prefer to see it all, just keep reading!



		BEST FOR						
PROGRAMME	Page(s)	Student engagement	Staff engagement	Behaviour change	Carbon reduction	Wellbeing	Biodiversity	Curriculum
<u>Student sustainability engagement-residences</u>	8-9	✓		✓	✓	✓		
<u>Student sustainability engagement - all</u>	10-11	✓		✓	✓	✓		
<u>Green Impact</u>	12-13	✓	✓	✓	✓			
<u>Fairtrade Universities and Colleges</u>	14	✓	✓				✓	
<u>Responsible Futures</u>	16	✓	✓					✓
<u>ESD Changemakers</u>	17	✓	✓					✓
<u>Student-led Sustainability Curriculum Mapping</u>	18	✓						✓
<u>Edible Campus</u>	20	✓	✓				✓	
<u>Hedgehog Friendly Campus</u>	21	✓	✓				✓	
<u>Wilder Campuses Advisory Programme</u>	22	✓	✓				✓	
<u>Alcohol Impact</u>	24	✓	✓	✓		✓		
<u>Drug and Alcohol Impact</u>	25	✓	✓	✓		✓		
<u>Drink Rethink</u>	26	✓	✓	✓		✓		
<u>Bespoke general support</u>	28	✓	✓	✓	✓	✓	✓	✓

SOS-UK IS AN EDUCATIONAL CHARITY FOCUSED ON SUSTAINABILITY

SOS-UK **engages, supports and empowers** students and wider society to learn, act and lead for sustainability. Ours is a long-term **investment in education for a better future.**

Our mission is getting more students **learning, acting and leading for sustainability**; embedding sustainability in education, **from early years to adult learning**; and making sustainability **more inclusive**, so it's for everyone.

We are proud that UNESCO recognise SOS-UK as one of the global leaders of education for sustainable development.

SOS-UK staff represent a range of academic and professional backgrounds from anthropology to biology, and with specialisms in communications and research.

This document outlines the support available for your university and college in 2024-25. Keep reading to find out how you can benefit!

Get in touch with hello@sos-uk.org if you have any questions.



Stay up to date by following us or signing up to our newsletter:

[Sign up to news](#)



WE ARE PROUD OF SOS-UK'S IMPACT - BE PART OF OUR JOURNEY

In 2021-22...

Our work reached over
74,500 staff



Over **225,000** students
were engaged through our
campaigns and projects

We delivered over **1,500**
webinars, trainings and events



We worked with over **800**
organisations; from schools to
NHS Trusts, from charities to
universities and colleges

We contributed to savings
of over 500 **tonnes** of CO₂



We supported
organisations to complete
over **10,000** actions to
improve sustainability

[Read the full 2021-22 annual report](#)

SUPPORTING POSITIVE SUSTAINABILITY BEHAVIOUR

We all drive and influence norms that make up our collective culture on campuses and beyond. By developing shared understandings of sustainability and identifying what needs to change, we can empower students and staff to take positive sustainability action. Check out our support for 2024-25 over the next few pages.

STUDENT SUSTAINABILITY ENGAGEMENT - RESIDENCES



Delivered under the Student Switch Off brand, or as part of your sustainability branding, this multi award-winning programme engages students living in your residences on environmental and social sustainability and introduces life-long sustainable living habits.

We will build your students’ sustainability knowledge and carbon literacy, focusing on enhancing their skills and experience, mobilising them to lead on sustainability initiatives, **resulting in quantifiable energy, waste and water reductions in halls of residence**. We will come to your campus, run events, training, quizzes, competitions and action weeks throughout the year as part of the core programme.

[Full programme information on our website.](#)



Best for

Student engagement

Behaviour change

Carbon reduction

Wellbeing

You can create a customised package with us that includes elements of our core programme and/or further bespoke engagement & education activities that you would like run for you.

Small campus (Up to 1,500 students in accommodation)	Medium campus (1,501 - 3,000 students in accommodation)	Large campus (Over 3,001 students in accommodation)
£6,350 (+VAT)	£8,175 (+VAT)	£9,850 (+VAT)

STUDENT SUSTAINABILITY ENGAGEMENT - RESIDENCES cont.



RECYCLING AUDITS IN RESIDENCES

Recycling audits provide a check of all bins in shared kitchens at key points in the year to give you a greater understanding on recycling habits and to feedback to students on their performance. Students will be incentivised and informed on how to correctly segregate their waste and increase their recycling to support improvements in waste segregation.

SOS-UK can deliver the audits either in conjunction with the residence engagement programme or run them as an independent standalone option.

[Full programme information on our website](#)

Best for

Student
engagement

Behaviour
change

Carbon
reduction

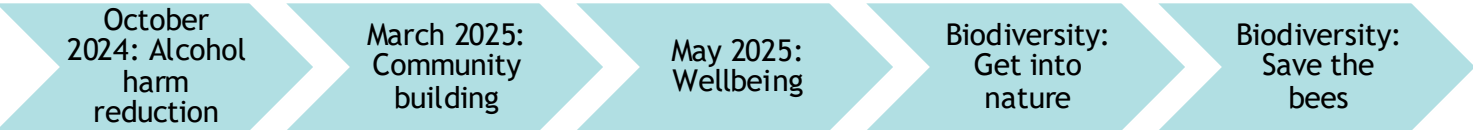
	Ran as part of residence engagement programme	Ran as stand-alone element
Recycling Audits	£1.35 (+VAT) per student per audit	£1.75 (+VAT) per student per audit

STUDENT SUSTAINABILITY ENGAGEMENT - ALL



WELLBEING AND BIODIVERSITY ACTION WEEKS

Our student engagement work doesn't just stop at those living in residences. We run bonus action weeks that focus on specific wellbeing and biodiversity themes. Action weeks will have a scheduled online activity each day including competitions, activity challenges and quizzes. These can be open to all your students, not just those in residences. There will be 3 wellbeing weeks at set points in the year, and 2 biodiversity weeks running on dates that suit your campus. You can choose to run one, a few, or all of the action weeks:



Best for

Student engagement

Behaviour change

Wellbeing

SOS-UK can deliver the action weeks either in conjunction with the residence engagement programme or as an independent standalone option. [Full programme information on our website.](#)

	Ran as part of residence engagement programme	Ran as stand-alone element
Wellbeing and Biodiversity Action Weeks	£575 (+VAT) per action week	£800 (+VAT) per action week

STUDENT SUSTAINABILITY ENGAGEMENT - ALL

Most students live off campus, and [our research shows](#) that they are increasingly concerned about energy bills, and struggle with cold, damp homes, leading to poor wellbeing, and in worst cases dropping out of university due to academic attainment.

You will receive: a visit to your campus during which we will run an event/stall; training for students to provide them with the tools to communicate effectively with landlords, understand their rights as tenants, and how to tackle common issues, including cold and damp at home; and a communication pack for you to share relevant information. The intended outcome is to support students to become more energy literate, to help them understand about the energy system and empower them to act on it whilst improving their thermal comfort.

SOS-UK can deliver this support for students either in conjunction with the residence engagement programme or run them as an independent standalone option.

[Full programme information on our website.](#)



- Best for
- Student engagement
 - Behaviour change
 - Wellbeing
 - Carbon reduction

	Ran as part of residence engagement programme	Ran as stand-alone element
Private rented sector support	£1,790 (+VAT)	£2,250 (+VAT)



GREEN IMPACT

Green Impact is our UNESCO award-winning change and engagement programme for workplaces. The learning and awards scheme helps staff and students understand sustainability, gives them a framework for action, and celebrates achievements. We work with you to support departments from across the institution to embed sustainability within their team, in a way that aligns with your local priorities, strategy, and other initiatives.

Support included within the Green Impact programme:

- **Co-creation of a fully bespoke online toolkit** of actions and resources to enable your staff to create positive change in their workplace (hosted on our new toolkit software);
- A **programme of support for your local Green Impact delivery lead**, including project planning, regular 1-2-1 calls, national networking calls, and access to a reporting dashboard;
- A **programme of support for your teams** to reach their desired award level, including local and national workshops.



At the end of each year your students will be invited to attend our **IEMA-approved auditor training course** and complete an audit of each Green Impact team to verify their award level and gather feedback.

Following their audit, teams and individuals will be recognised with an award, and you will receive a report outlining their achievements and impact.

For further information, visit the [Green Impact website](#). Programme fees for 2024-25 are:

First year of participation		Subsequent years of participation	
Up to 1,500 FTE staff	1,501 or more FTE staff	Up to 1,500 FTE staff	1,501 or more FTE staff
£9,600 (+VAT)	£10,900 (+VAT)	£9,000 (+VAT)	£9,975 (+VAT)

greenimpact

Best for

Behaviour
change

Carbon
reduction

Staff
engagement

Student
engagement

Wellbeing

GREEN IMPACT: ADDITIONAL SUPPORT

To help you get the most out of Green Impact, we offer additional support packages that you can add on to your programme.

Green Impact 2024-25 bolt on fees	
<p><u>Green Impact Project Assistants (GIPAs)</u></p> <p>Our volunteering opportunity for students to support your Green Impact teams, highly recommended for participating institutions to increase student-staff collaboration for sustainability.</p> <p>Tier 1 includes delivery of the initial training of your GIPAs and guidance and templates for you to support them over the year.</p> <p>Tier 2 includes everything in Tier 1 as well as two additional days of training and/or support for your GIPAs, ongoing check-ins, and a wrap-up event to support with your GIPAs careers development.</p>	<p>£910 + VAT (tier 1)</p> <p>£2,630 + VAT (tier 2)</p>
<p><u>Communication Support</u></p> <p>We know developing impactful communications takes time, so we offer a support package to build your sustainability communications and keep teams engaged, such as creating newsletters, social media content, or 1-2-1 communications with your teams.</p> <p>Tier 1 includes 4 days of communications support. Tier 2 includes 7 days of communications support. We will discuss with you how best to use this time to build recognition of, and engagement with, Green Impact.</p>	<p>£1,620 + VAT (tier 1)</p> <p>£2,835 + VAT (tier 2)</p>
<p><u>Carbon Literacy training</u></p> <p>This bolt-on is to upgrade one of the support days included in the standard Green Impact programme to deliver Carbon Literacy training and certification for up to 20 staff and/or students. Carbon Literacy is a well-respected training to build an awareness of the carbon dioxide costs and impacts of everyday activities, and the ability and motivation to reduce emissions, on an individual, community and organisational basis. Running Carbon Literacy training alongside your Green Impact programme can build local capacity and offers an exciting professional development opportunity with an externally-verified certification for learners.</p>	<p>£1,800 + VAT</p>

Best for

Behaviour
change

Carbon
reduction

Staff
engagement

Student
engagement

Wellbeing

FAIRTRADE UNIVERSITY AND COLLEGE AWARD

The Fairtrade University & College Award is run in partnership with the Fairtrade Foundation for universities and colleges that have made a commitment to supporting and using Fairtrade.

NUS research tells us that 90% of students say they want to buy more products that don't harm the people that produce them and 84% say they trust the Fairtrade Mark the most of all product marks.



From procuring more Fairtrade products to embedding trade justice principles in policies and campaigns, the Award seeks to impact students, staff and producers.

[Full programme information on our website.](#)

In previous years we offered two membership options (basic and supported levels) however in October 2024, due to high numbers of sign ups, Fairtrade has moved to one level of membership. If your university or college would like extra support with specific Fairtrade projects we can now offer bespoke consultancy on a day rate basis.

Higher Education Institutions	£1,700 +VAT
Further Education Institutions	£1,040 +VAT



Best for

Student
engagement

Staff
engagement

Sustainable
Food

SUPPORTING CURRICULUM CHANGE

Changing formal education is fundamental to transforming society, which is why SOS-UK offers programmes that support universities and colleges to embed sustainability and climate justice into their teaching and learning. Check out our support for 2024-25 over the next few pages.

RESPONSIBLE FUTURES

Responsible Futures is our accreditation programme and supported change framework for embedding sustainability and climate justice through all aspects of learning in partnership with students. It promotes a **whole-institution approach** to embed sustainability learning through **formal, informal, and subliminal curricula**. To date, **48** universities and colleges have participated in partnership with their students' union, representing over **one million students** in the UK and globally.

You will receive 1) access to the online toolkit and framework, 2) annual bespoke support (which could include training, audit preparation, speaking at events, research), 3) membership to the national and global cohort network, national support afternoons (2-3 per year), 4) informal online cohort catch ups and webinars (2-3 per year) led by SOS-UK and nominated host partnerships, 5) access to the online resource bank, 6) two-day student-led audit, feedback report and 7) ad hoc remote support as required.

[Full programme information on our website.](#)



Best for

Student
engagement

Curriculum

Staff
engagement

	First year of participation	Subsequent years of participation	ESD changemakers bolt-on*
Higher Education Institutions	£5,100 + VAT	£4,410 + VAT	£5,110 + VAT
Further Education Institutions	£4,450 + VAT	£3,990 + VAT	

*See page 17 for information on Education for Sustainable Development Changemakers

EDUCATION FOR SUSTAINABLE DEVELOPMENT (ESD) CHANGEMAKERS

SOS-UK advocates for students as co-creators in implementing [ESD](#) curriculum design and innovation. Building on the success of our Green Impact Project Assistants, which connect students with staff teams for implementing sustainability behaviours, ESD Changemakers partners academics with students to reform the curriculum in their discipline. Using a co-creation approach, we support students and academics to embed ESD in teaching and learning to address climate justice. Students and staff will be supported by SOS-UK to:

- Gain skills and understanding for sustainability and sustainability education,
- Become partners in progressing institutional change to embed ESD at your institution,
- And support academic and operational staff to work together in developing whole-institution engagement with sustainability learning.

Please note, we are happy to tailor support to your institutional context to ensure tangible and impactful outcomes. [Full programme information on our website](#)

Our student-led sustainability curriculum mapping package is also offered at a reduced rate to institutions participating in ESD Changemakers to develop a baseline for curriculum reform projects. See page 18.*

Programme	Cost
ESD Changemakers	£5,610 + VAT
*Student-led curriculum mapping bolt-on	£1,960 + VAT



Best for

Student
engagement

Curriculum

Staff
engagement

STUDENT-LED SUSTAINABILITY CURRICULUM MAPPING

A support package for mapping the UN Global Goals for Sustainable Development (SDGs), sustainability competencies and Education for Sustainable Development (ESD) approaches across the formal curriculum through a **student-led audit**.

Universities, colleges, and students' unions are increasingly examining how they might map their teaching and learning against the SDGs. In response to [institutional and student demand](#), in partnership with the University of Winchester, we developed a training and support package for mapping the curriculum to the SDGs and wider sustainability learning through a student-led audit. We offer three tiers of support for the mapping, outlined below or can create **bespoke packages** depending on your needs. Mapping can take place at the faculty-level or across the whole institution. [Full programme information on our website.](#)

To date, we've worked with **16** institutions and **400** of their students to: 1) establish a baseline for measuring progress, 2) uncover pockets of good practice around sustainability 3) facilitate dialogue between staff and students 4) create an evidence base for more work in sustainability 5) encourage and support student leadership of this work.



“Through the mapping project, I felt more a part of my [institution] and was able to connect with lecturers and staff.”
Student Auditor

Best for

Curriculum

Staff
engagement

Student
engagement



	Tier 1	Tier 2	Tier 3
Module descriptor methodology	£2,370 + VAT	£3,285 + VAT	£4,475 + VAT
Student experience methodology	£3,260 + VAT	£4,270 + VAT	£5,230 + VAT

SUPPORTING NATURE ON CAMPUS

We support universities and colleges to address the ecological crisis through running practical, solutions-focused biodiversity and nature programmes. The UK is one of the most nature depleted countries in the world, and we need to act. Check out our support for 2024-25 over the next few pages.

EDIBLE CAMPUS *NEW*

Edible Campus will help transform your campus into a connected landscape of food for people and wildlife. Our focus is on climate resilient growing, increasing biodiversity, and supporting student and staff wellbeing.

How it works...

- You will be visited on campus by one of our expert staff to explore opportunities, undertake a practical task and discuss your goals for the year
- You will be supported through regular 121 calls, helping to keep on track with your annual goals and overcome challenges as they arise.
- You'll get access to online skills-based training sessions for students and staff

[Full programme information on our website.](#)

Annual membership fee: £2,950 + VAT. We also offer additional in person site visits and bespoke consultancy (for example creation of a sustainable food policy), please [email](#) us to discuss these options.

Price includes: 1 in person visit, 121 support calls, group skills sessions (topics based on demands of the cohort), generation of resources and ad hoc support.

Benefits include: Demonstrable action on UN Sustainable Development Goals 2, 3 & 15 and the climate and nature emergencies; goal setting that feeds into wider sustainability strategies and strategic frameworks; engagement activities focused on student wellbeing and the cost-of-living crisis; skill development on low carbon growing; priority small pot funding opportunity; opportunities for collaboration, comms around achievements and feeding into existing research, teaching and living labs.



Credit: Leeds Green Action Society



Best for

Biodiversity

Student
engagement

Staff
engagement

Wellbeing

HEDGEHOG FRIENDLY CAMPUS AWARD

Hedgehogs are a beloved species now vulnerable to extinction in the UK. Hedgehog Friendly Campus is an awards programme with a custom toolkit and associated activities that offer your staff and students the opportunity to:

- Protect hedgehogs and other wildlife from hazards
- Create and enhance habitats
- Raise awareness and engage staff and students

How it works

This popular programme supports your university or college to work through Bronze, Silver, Gold and Platinum awards. We provide opportunities to track wildlife, create engaging awareness campaigns and support you to restore habitats. Awards accredited by the [British Hedgehog Preservation Society](#).

[Full programme information on our website.](#)



Best for

Staff
engagement

Wellbeing

Student
engagement

Biodiversity

Full University & College Support Package: £3,823 +VAT (£2868 +VAT for subsidised places from [British Hedgehog Preservation Society](#), available on a first-come, first-served basis). Includes toolkit access, planning and support calls with lead contact, student-led audit training, three additional supporting activities (one in person), audit and accreditation certificate, [student ambassador](#) and [auditor](#) digital skills badges, ad hoc support and access to The Hedge peer networking sessions.

Basic University and College Support Package: £800 +VAT. Includes access to the toolkit, The Hedge peer networking sessions and allows you to maintain accreditation with an end of year audit (no supporting activities, planning or support calls are included).

Minimum Access Package: £50 +VAT. Includes access to the toolkit, The Hedge peer networking sessions and you will be listed as a participating member on our [website](#) (no accreditation, supporting activities or planning or support calls).

Free package: Includes toolkit access only (no accreditation, supporting activities, planning or support calls or access to The Hedge networking sessions).

WILDER CAMPUSES ADVISORY PROGRAMME *NEW*

Background

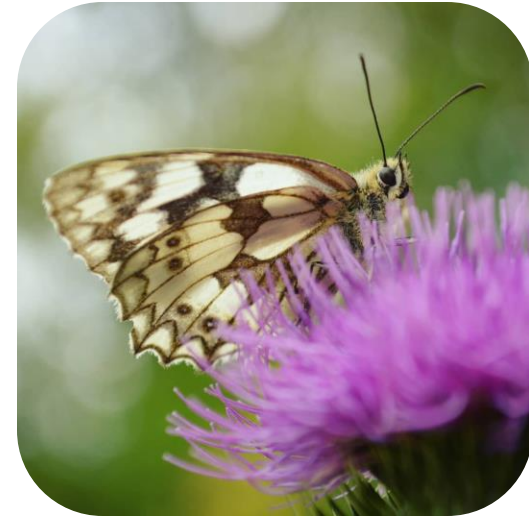
SOS-UK's brand-new Wilder Campuses Advisory Programme supports your university or colleges to tackle the nature emergency with students at the forefront.

How it works

You'll receive an initial support call, a student nature consultation, a student habitat survey training course and a final report, allowing you to make informed, student-led decisions on what you can do for nature.

Wilder Campuses will be particularly useful if your university or college is yet to write a Biodiversity Action Plan, or your current plan is due to be reviewed.

[Full Programme Information on our website.](#)



Best for

Wellbeing

Student
engagement

Biodiversity

Annual cost: £3,100 +VAT. This is a pilot programme, so we can be flexible on the elements of the programme and cost.

Price includes: An initial support call with SOS-UK's Biodiversity team, an in-person student consultation capturing student opinions on your current or proposed Biodiversity Action Plan, an in-person student habitat training course and a final Wilder Campuses report. The report will include the results from the student consultation, helping you to plan your next steps for nature. It will also include results from the student habitat survey as well as a recommended supplier list from our network of partners.

Other benefits: There is a bolt-on option to access our national student nature opinion survey which you can share with your students.

SUPPORTING STUDENT HEALTH AND WELLBEING

We supports universities and colleges to take a holistic approach in creating healthy and inclusive cultures on campuses around drugs and alcohol. Check out our support for 2024-25 over the next few pages.

ALCOHOL IMPACT

A whole-university programme and accreditation mark designed to foster responsible drinking cultures for your students. We adopt social change theory aiming to reduce harm and improve welfare, well-being and academic achievement - whilst creating more inclusive spaces and enhancing the student experience.

How it works

- You'll have access to our online toolkit that provides resources and highlights areas of good practice.
- Your students' union and university work together to improve their working practices and undertake several ambitious behaviour change interventions
- After 2 years, SOS-UK trains and supports your students to conduct an audit
- If criteria have been completed to a satisfactory level, the institution is awarded with our accreditation mark



**Alcohol
Impact**

Best for

Behaviour
change

Wellbeing

You will receive a support package including regular 1-2-1s, local and national workshops and training events and numerous resources and project materials. [Full programme information on our website.](#)

Working towards accreditation fee, supported for one year	Post accreditation membership for one year	Working towards accreditation fee, supported for two years (10% discount)	Post accreditation membership for two years (10% discount)
£6,000 +VAT	£4,900 +VAT	£10,800 +VAT	£8,820 +VAT

Please note - If signing up to a multi-year programme, you can either pay via one invoice or be invoiced in annual installments.

DRUG AND ALCOHOL IMPACT

Building upon the success of Alcohol Impact, Drug and Alcohol Impact supports institutions in taking a holistic approach to creating healthy, inclusive cultures around drugs and alcohol. The programme not only supports institutions to embed social norms of responsible drinking on their campuses but also refocuses the conversation on drugs towards reducing harm and prioritising the health and wellbeing of students.

How it works

- Our online toolkit provides resources and highlights areas of good practice.
- The students' union and university work together to improve their working practices and undertake a number of ambitious behaviour change interventions
- After 2 years, SOS-UK trains and supports local students to conduct an audit
- If criteria have been completed to a satisfactory level, the institution is awarded with our accreditation mark

Participating institutions receive a support package including regular 1-2-1s, local and national workshops and training events and numerous resources and project materials. [Full programme information on our website.](#)

Working towards accreditation fee, supported for one year	Post accreditation membership for one year	Working towards accreditation fee, supported for two years (10% discount)	Post accreditation membership for two years (10% discount)
£7,190 +VAT	£5,950 +VAT	£12,890 +VAT	£10,710 +VAT

Please note - If signing up to a multi-year programme, you can either pay via one invoice or be invoiced in annual installments.



DRINK RETHINK

Drink Rethink is a preventative approach helping your students to reflect on their drinking, considering the risks associated and the benefits of cutting down. The intervention is delivered by trained students ambassadors who use a nationally recognised evidence-based behaviour change tool.

[Full programme information on our website.](#)

Programme fees and included content for 2024-25 are:

Tier 1 Support Student ambassador recruitment material, 1 day ambassador training (or train the trainer), digital copies of leaflets and branding, access to raw data and telephone/email support.	Tier 2 support Same as Tier 1 plus pre and post-surveying of student ambassadors, access to raw data, production of simple graphs for use in reports and telephone/email support	Tier 3 support Same as Tier 2, plus one day on-site support of Drink Rethink Ambassadors and production of a full final report
£1,780 +VAT	£2,040 +VAT	£2,615 +VAT



Best for

Behaviour
change

Wellbeing

GENERAL SUPPORT

We offer a range of fully bespoke activities, training and support to help drive sustainability in a range of areas through your institution, delivered by our friendly expert team.

BESPOKE ACTIVITIES, TRAINING & SUPPORT

Training workshops and events

Designed to equip and inspire students, officers, staff, academics, and volunteers to become leaders for sustainability, our team of expert trainers can run hourly, half day, full day, or two-day sessions, depending on the depth of information and engagement you require through our [Learning Academy](#). More detail on the next few pages.

Audits, Assessments, Evaluation and Research

Working with our insight team to develop an evidence base for your work, analyse your impacts, identify opportunities for improvement and assess quality.

Development and Mentoring

Whether you want to put behaviour change theory into practice by designing your own in-house programme, have identified a particular opportunity you'd like to develop, or you recognise that certain members of your team would benefit from a bit of support to really shine, SOS-UK can help.

Bespoke projects

We can work with your organisation to create bespoke projects to support and further your sustainability work, using a combination of our training, evaluation and project management experience. If you are a university or college looking to undertake a project with your own students or staff, please get in touch to discuss your needs, and we can develop a proposal with you.

To get more information or sign up, either email hello@sos-uk.org, or submit a request through [our sign-up form](#).



Best for

Wellbeing

Staff
engagement

Sustainable
Food

Carbon
reduction

Curriculum

Student
engagement

Behaviour
change

LEARNING ACADEMY: TRAINING, WORKSHOPS AND EVENTS

We provide **learning opportunities** delivered in a variety of methods including **face-to-face and online**, and to a range of audiences including students, student representatives, institution staff.

We offer a range of **workshops**, which can be made bespoke upon request. Check out our standard sessions or find out more about bespoke sessions on our [Learning Academy webpage](#).

Current centralised workshops dates can be found in our [learning and events calendar](#).

All training is **delivered by our in-house SOS-UK staff**.

Each training session is open to any **institution or individual**.

We're keen to share our knowledge and experience, so if you're running a **conference, event or lecture** and are looking for speakers, get in touch on hello@sos-uk.org



LEARNING
academy

Best for

Student
engagement

Behaviour
change

Carbon
reduction

Staff
engagement

Curriculum

Price: Speaker fees start from £150 + VAT, and bespoke training starts from £450 + VAT. [Find out more on our Learning Academy pages here](#) or get in touch on hello@sos-uk.org

LEARNING ACADEMY: CARBON LITERACY

Carbon Literacy is defined as: “An awareness of the carbon dioxide costs and impacts of everyday activities, and the ability and motivation to reduce emissions, on an individual, community and organisational basis.”

Our training provides attendees (staff or students) with introductory science on the climate crisis to understand the social and environmental impacts of carbon dioxide emissions. Additionally, **our SOS-UK course has an increased focus on climate justice, and the inter-related nature of carbon emissions and wider environmental concerns such as biodiversity loss.**

During the training attendees will begin to develop their own toolkit and strategies for acting on and communicating action on the climate crisis. The course lasts around 12 hours and includes online training elements and self-study.

This training is certified by The Carbon Literacy Project. Upon successful completion of the training, learners will be awarded a Carbon Literacy certificate and a digital badge.

Benefits for the university or college include:

Our Carbon Literacy course supports learners to identify and plan realistic and impactful actions to reduce their carbon footprint in the context of their workplace or place of study, thus contributing towards sustainability aims, and potentially reducing direct costs to the institution such as energy and travel.

Price: Bespoke training per university/college **starts from £2,300 + VAT** for 20 spaces and includes certification for all attendees. [Find out more on our Learning Academy page](#) or get in touch on hello@sos-uk.org



LEARNING
academy

Best for

Student
engagement

Behaviour
change

Carbon
reduction

Staff
engagement

Curriculum

INCLUSION FOR CLIMATE JUSTICE

Data from [2022 research by SOS-UK, UKRI and IEMA](#), and the latest findings from SOS-UK led [The RACE Report](#) highlights the lack of ethnically and racially minoritised staff in environment professions and the sector's career pipelines. The RACE Report found that only 7% of professionals in the sector are People of Colour. The average for the entire work population is double that (14%).

Lack of inclusion and diversity in the sector is preventing truly delivering on climate and environmental justice. The tertiary education sector has a critical role in addressing this. SOS-UK's Inclusion and climate justice team was set up to tackle this issue, working directly with students, employers, and colleges and universities.

6% to 14% of students taking higher education courses closely related to environment careers identify as Black, Asian, Mixed or other ethnicities in comparison with 26% across all higher education subjects.

[SOS-UK, UKRI, IEMA, 2022](#)

LEARNING
academy

Best for

Student
engagement

Behaviour
change

Carbon
reduction

Staff
engagement

Curriculum

We offer tailored support for staff and students

- **Workshops, training and consultancy for academic staff (and students)** leading on and working on environment, climate, sustainability and conservation related modules and courses. This could include those working on (or studying) courses from geospatial mapping to sustainability in the built environment; to environmental science or political ecology. Workshops will focus on better inclusion onto courses, help with how the courses are structured, as well helping students have better access to academic and career development in the sector.
- **Training and consultancy for professional services staff** focused on careers, recruitment and HR teams with the aim of improving access for underrepresented students to the green and associated sector.
- We can provide **bespoke support and mentoring** for individual students or staff, teams and groups within your institution.

Price: Bespoke training starts from £450 + VAT. [Find out more on our Learning Academy pages](#) or get in touch at hello@sos-uk.org

RESEARCH

We've engaged with students and staff on behalf of students' unions, universities, commercial businesses, sector bodies and government departments as well as carrying out our own research linked to our different areas of work.

We offer a full range of research methodologies and have experience of delivering qualitative and quantitative research projects. With access to over half a million students, we can engage with students of all ages, backgrounds and study types.

Examples of the projects we have delivered include:

- In-depth reviews of attitudes and behaviours
- Quick polling on topical issues
- Impact evaluation
- Concept testing including co-creation

[Our website](#) provides further details of our research, or alternatively please get in touch to discuss your specific requirements.

Rachel Drayson
Head of Research and Impact
Rachel.Drayson@sos-uk.org



Best for

Student
engagement

Behaviour
change

Carbon
reduction

Staff
engagement

Curriculum

Wellbeing

Sustainable
Food

RESOURCING

Does your team need additional support to deliver your Green Impact and Responsible Futures goals? Do you know where to find the best candidates?

[Change Agents UK \(CAUK\)](#) is a sustainability education charity. Our subsidiary, Change Agents UK Trading Ltd, offers both recruitment and employment services to bring you the right candidate for your Green Impact, Responsible Futures and other sustainability roles. By recruiting, training and supporting people from our network of thousands of new sustainability professionals, we help organisations to make positive social, economic and environmental changes.

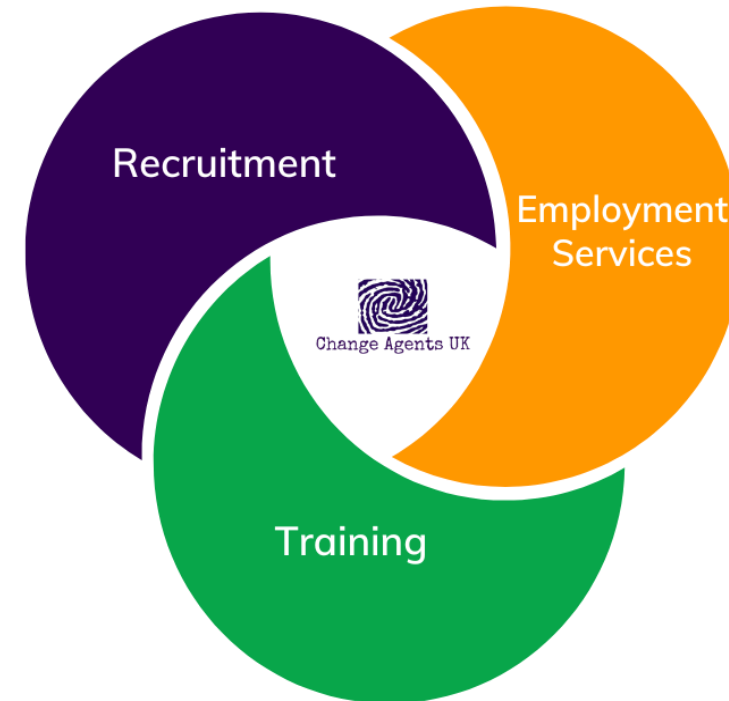
Recruitment

CAUK can cover all aspects of recruitment from working with you to define job descriptions to conducting interviews and managing the offer process.

Employment

CAUK can employ staff on your behalf through our full HR and payroll employment management Service. If you need additional sustainability resources but can't hire directly, we can help. All staff recruited or employed through CAUK have access to the [Sustainability Leadership Skills Development Programme](#), supported by the CIWM.

Contact [Megan Sturton](#) if you have any questions about CAUK resourcing services.



Best for

Student
engagement

Staff
engagement

[Access our 2024-25 sign up form](#)

We look forward to supporting you on your sustainability journey.

Connect with us:



[sos-uk.org](https://www.sos-uk.org)

hello@sos-uk.org

Registered charity: 1184011



STUDENTS
ORGANISING FOR
SUSTAINABILITY
UNITED KINGDOM